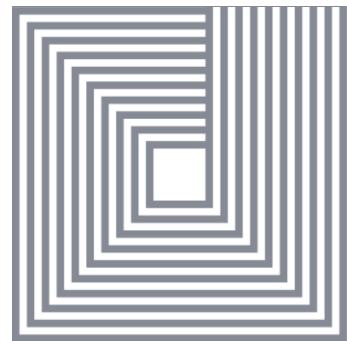


WELLSITE GEOLOGY IN PRACTICE



By: **Sara Fakhry**
Wellsite Geologist
Trident Petroleum Co.





WHO ARE YOU?



THE OBJECTIVE

Supervise contractors, , witness their operations, and revise their services invoices. ●

Identify & observe drilling hazards (losses, gains, gases, shale cavings etc.) ●

Pick Casing, Core Points, formation tops and TD Determination. ●

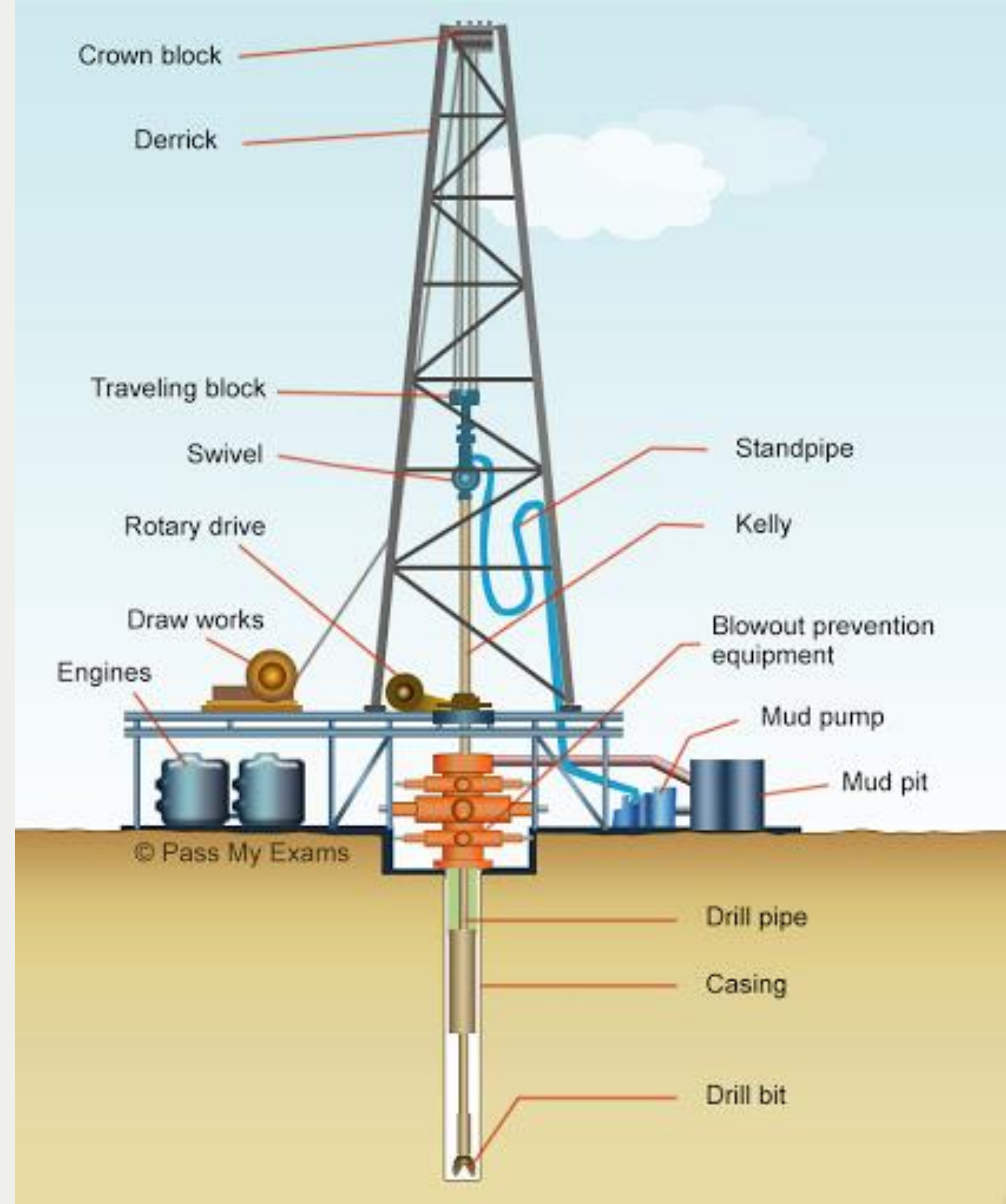
Make real-time decisions about suspending or continuing drilling. ●

Prepare the mud log, and the daily & final reports. ●

Describe drilling cuttings. ●

Preliminary evaluation of pay zones. ●

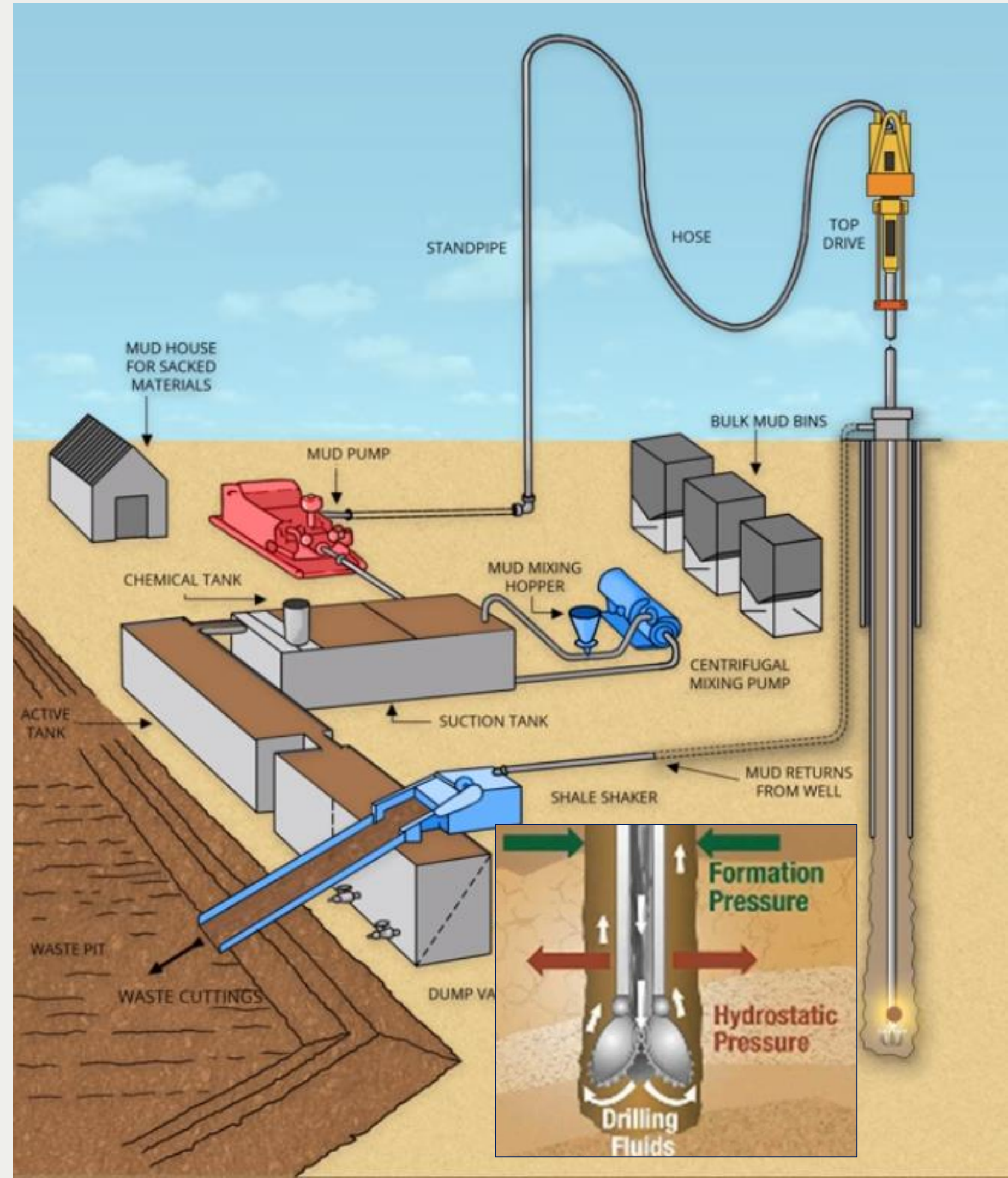
THE RIG



THE MUD

- USES OF DRILLING MUD:

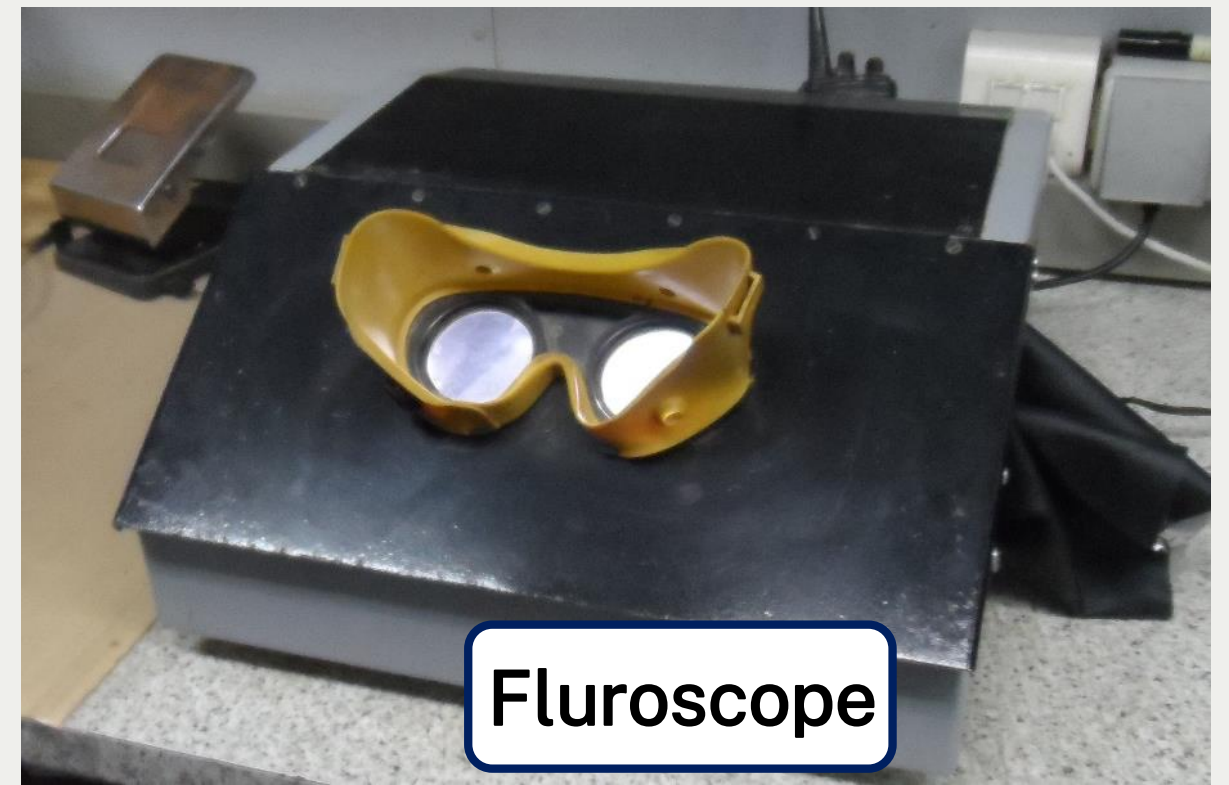
- To cool & lubricate the drill assembly.
- To clean out the hole of the drilled cuttings.
- To lift the drilling cuttings to the surface.
- To maintain well bore stability/hole size.
- To control formation pressure.



THE OFFICE



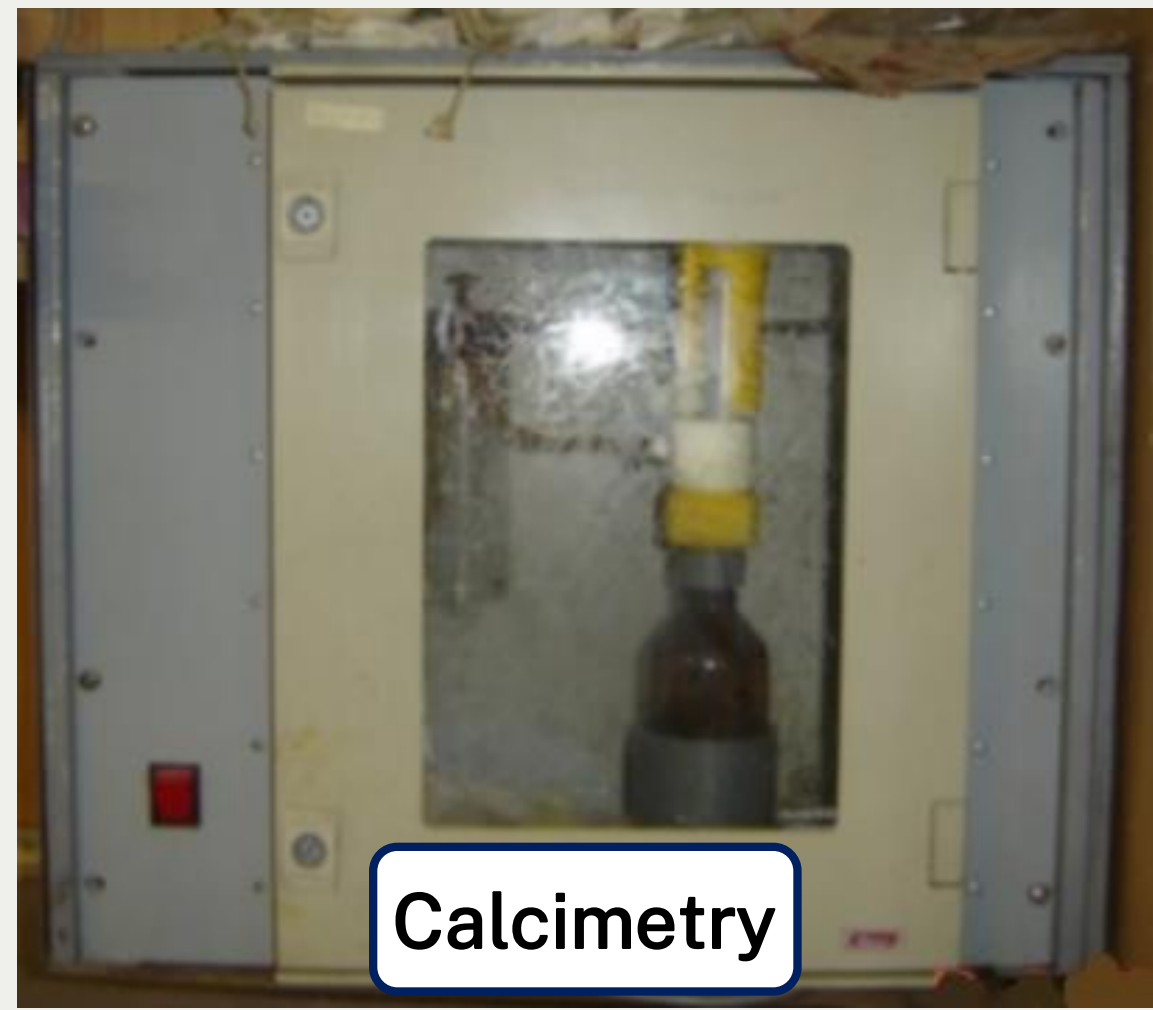
THE TOOLS



Fluroscope



Worksheet



Calcimetry

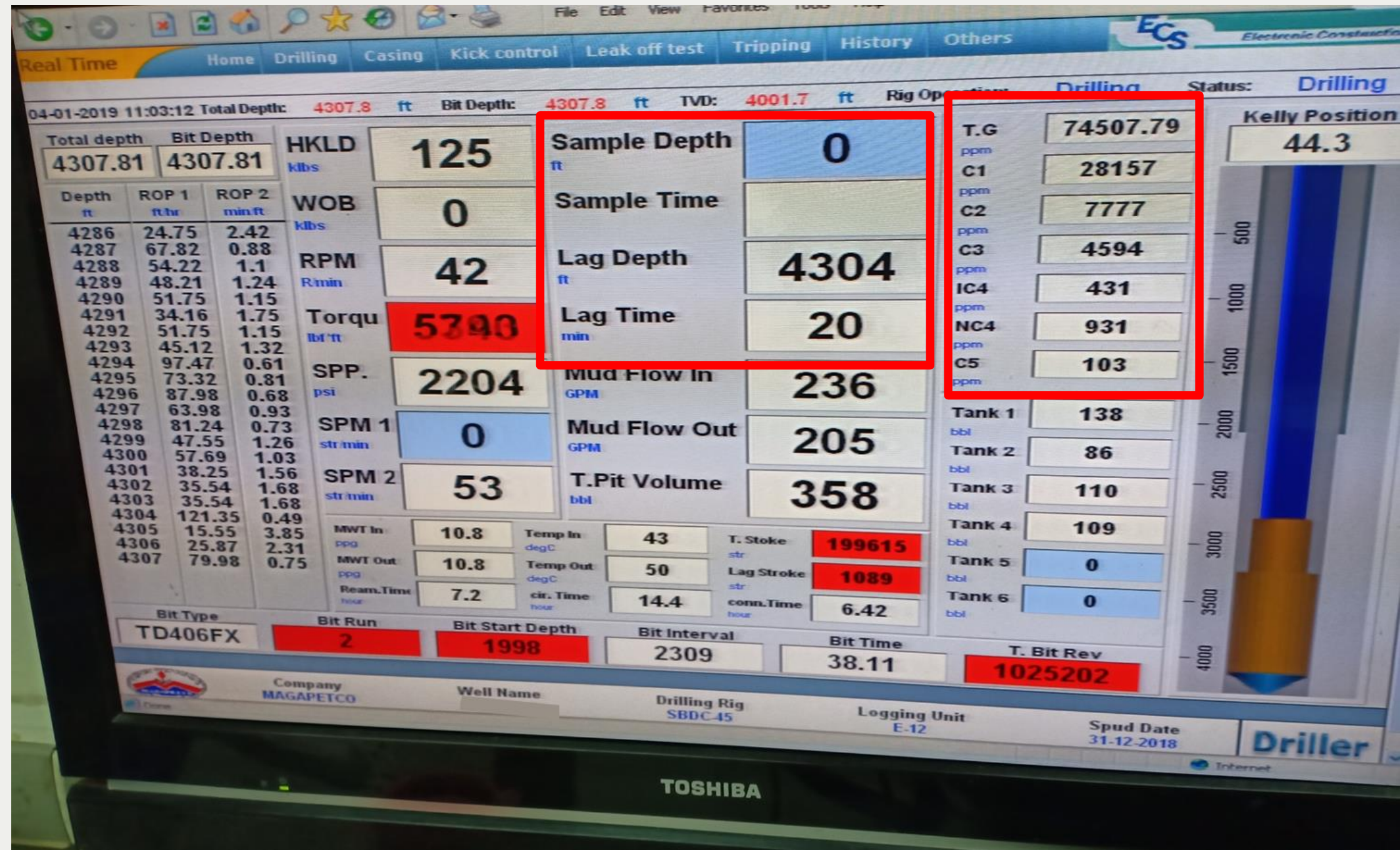


Microscope & Chemicals

READING

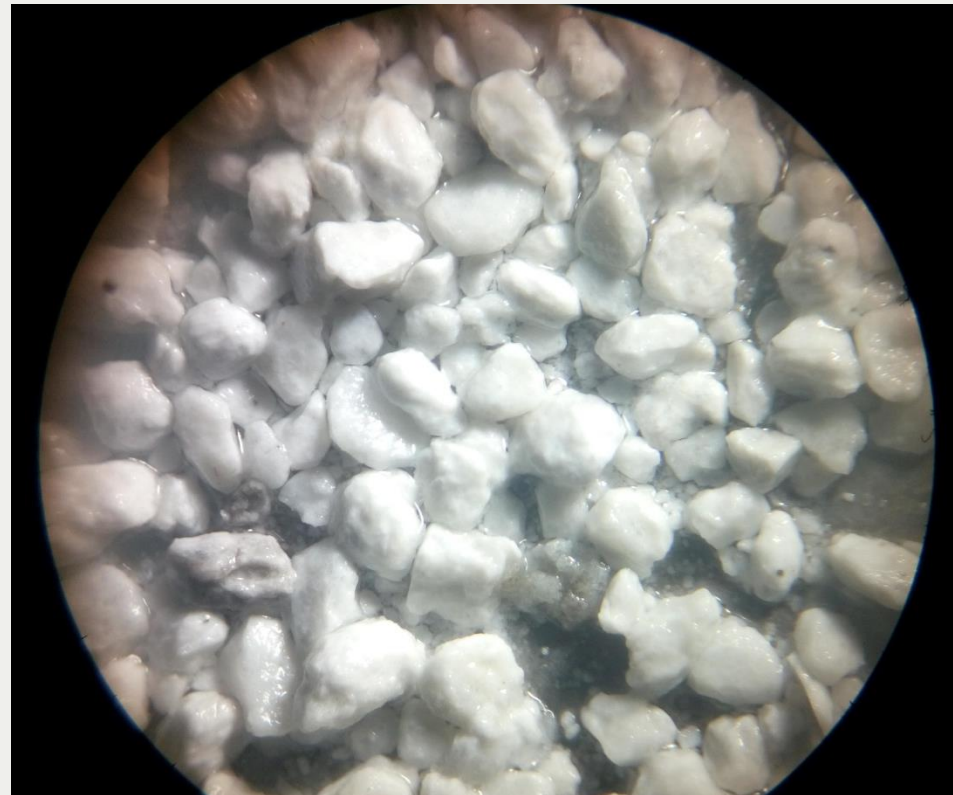
THE

SCREEN



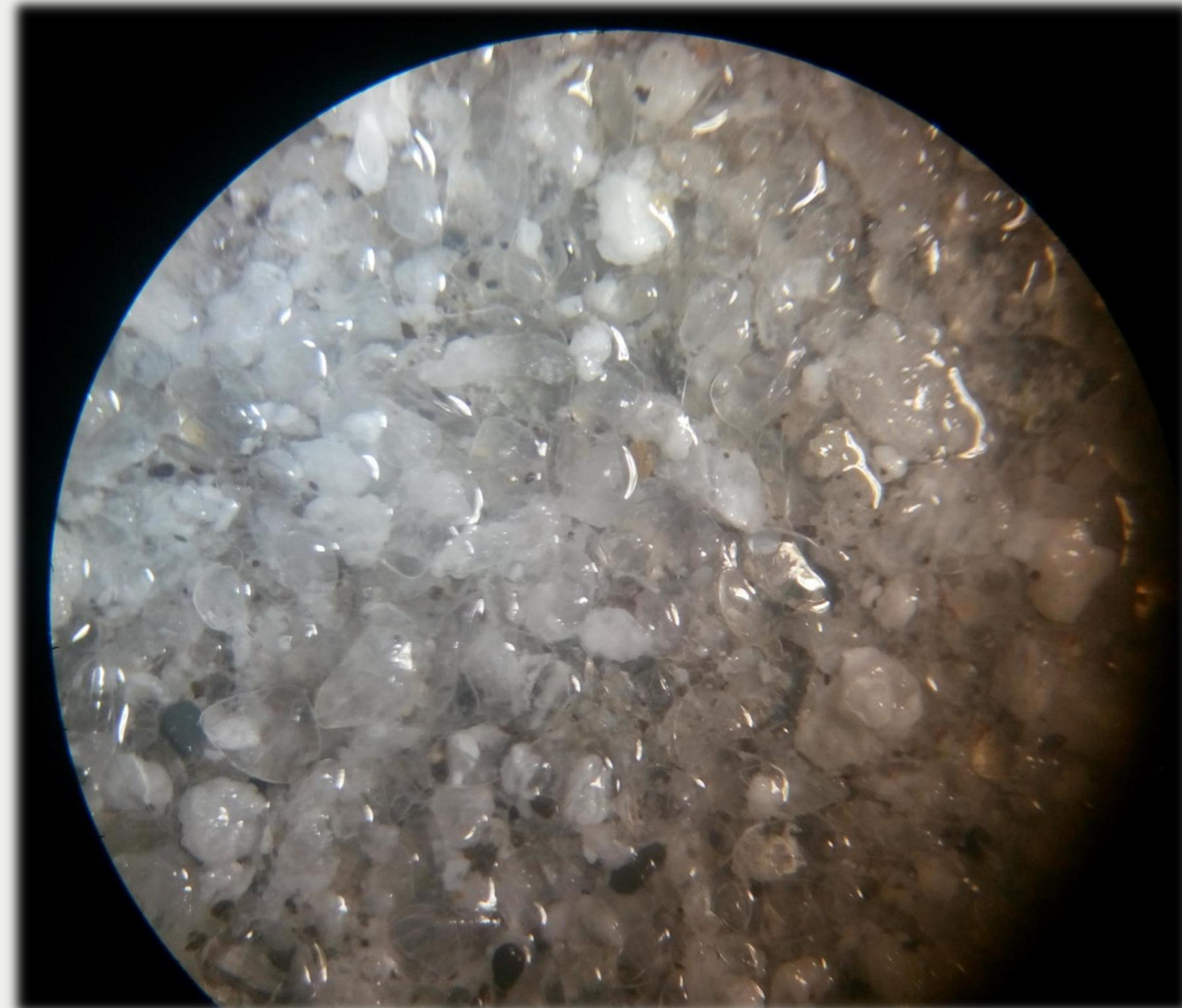
SAMPLES

DESCRIPTION



SAMPLES

DESCRIPTION

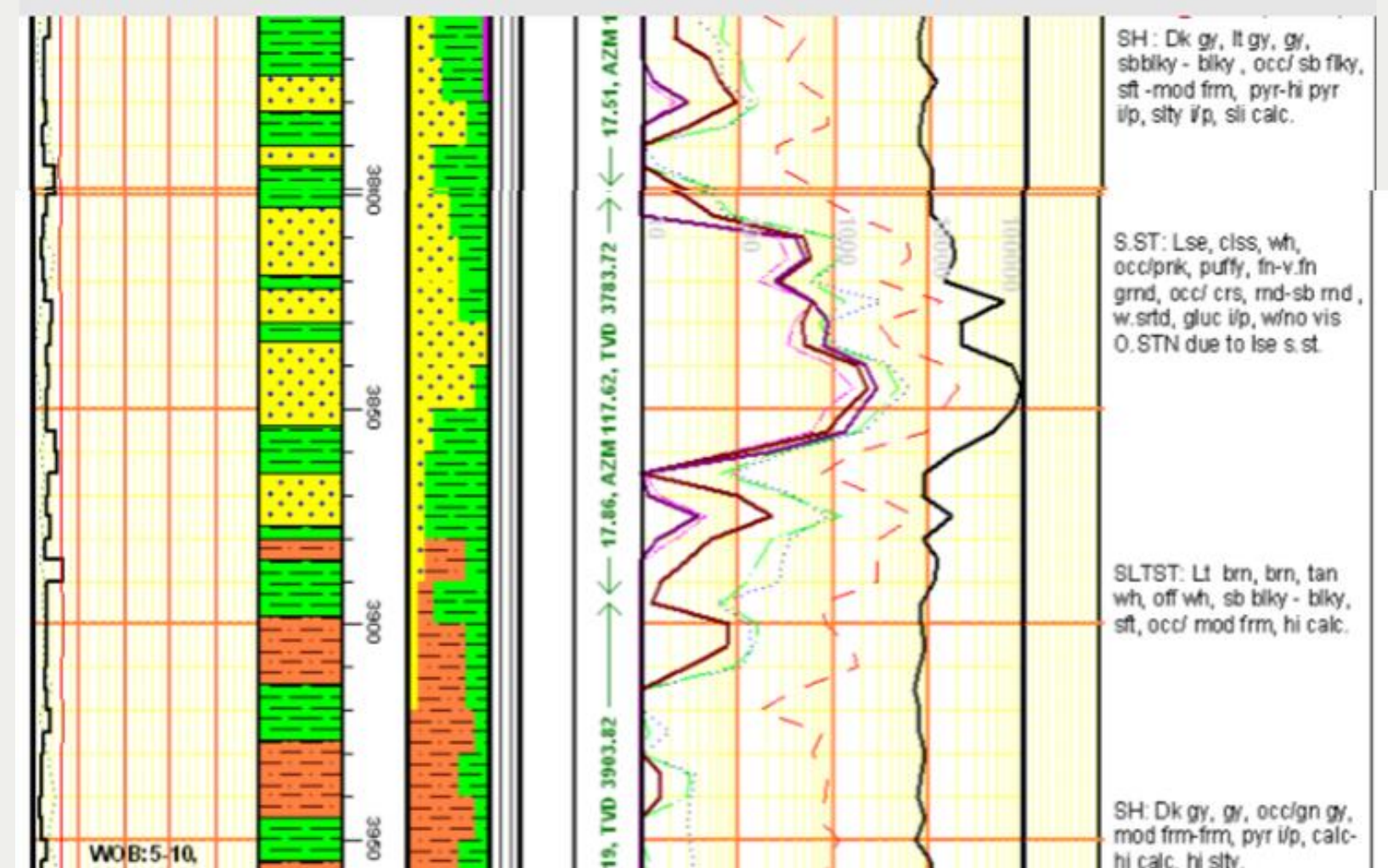
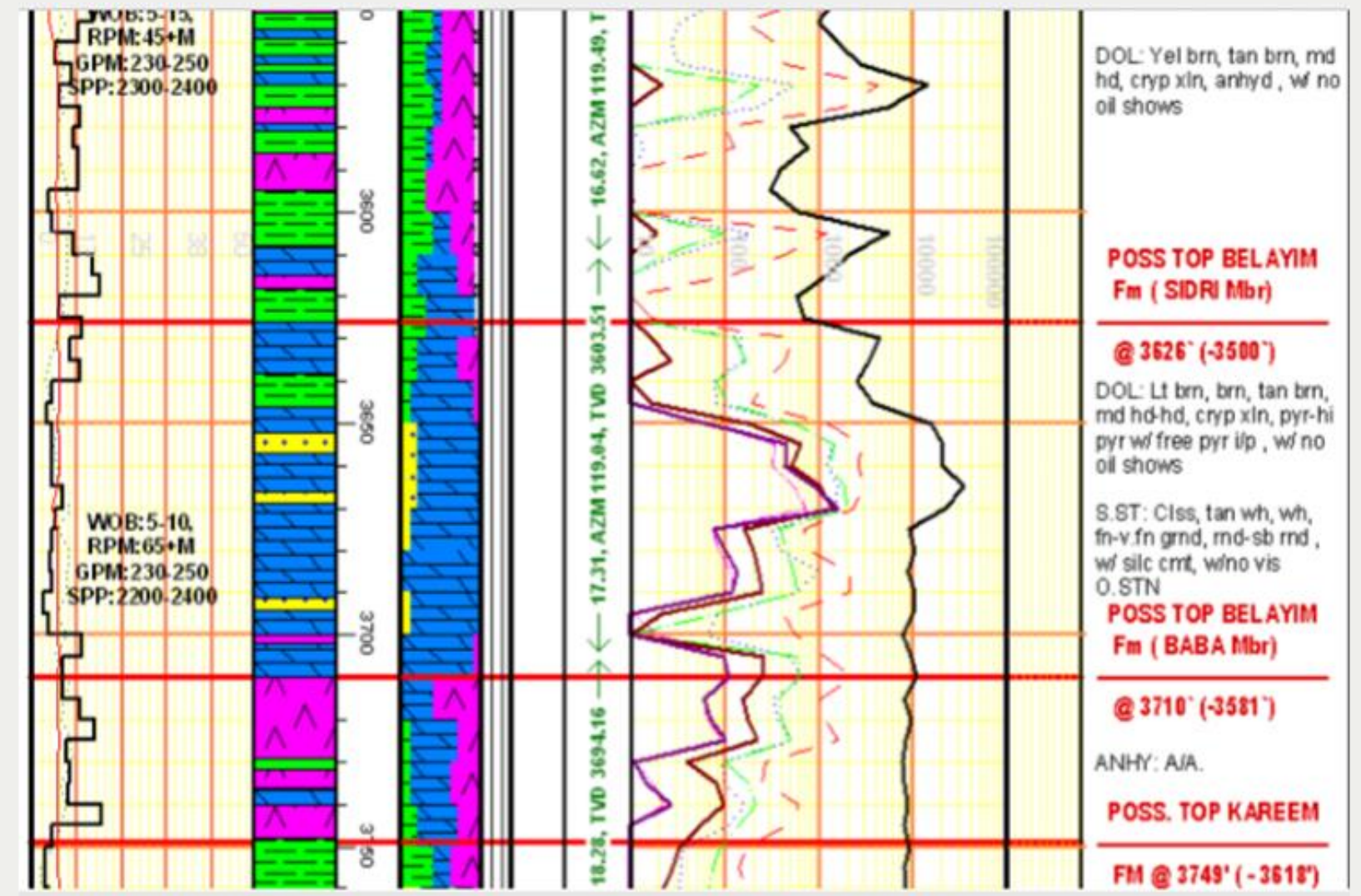


HANDLING THE PRESSURE



THE MUD LOG

Symbols			MUD TYPE		
	Partial Loss		Complete Loss		Electric Log
	Fluid kick		Casing Shoe	LOT	Leak Off Test
	Gas kick		Recovered Core	LCM	Lost Circulation Material
	New Bit		Non Recovered Core	DST	Drill Stem Test
				DS	Deviation Survey
Unit No. : ALPHA DRILL E# 12					
	Conglomerate		claystone		Basement
	Sand		Coal		Siltstone
	Marl		Limestone		Sandstone
	Cherty Limestone		Salt		Cherty Sandstone
	Shale		Gypsum		Dolomite
					Anhydrite
					Silty
					Sandy
					Calcareous
					Pyritic
					Gluconitic
					Fossils
					LCM, CaCO3
					Cement



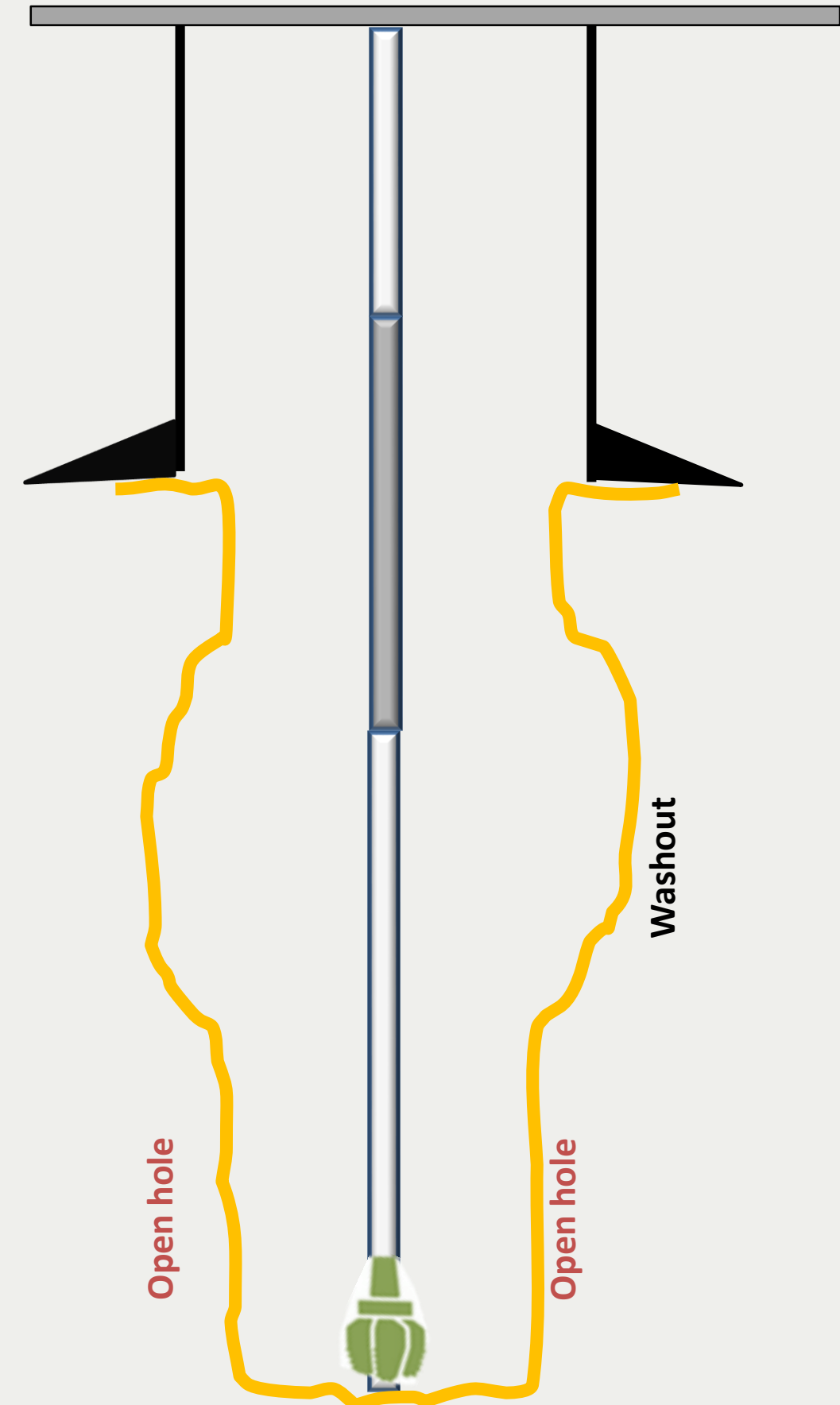
CASE STUDY 1:

- Would you run the logs?

Cancel Logs

Modify the program

• What are the most reliable data here?



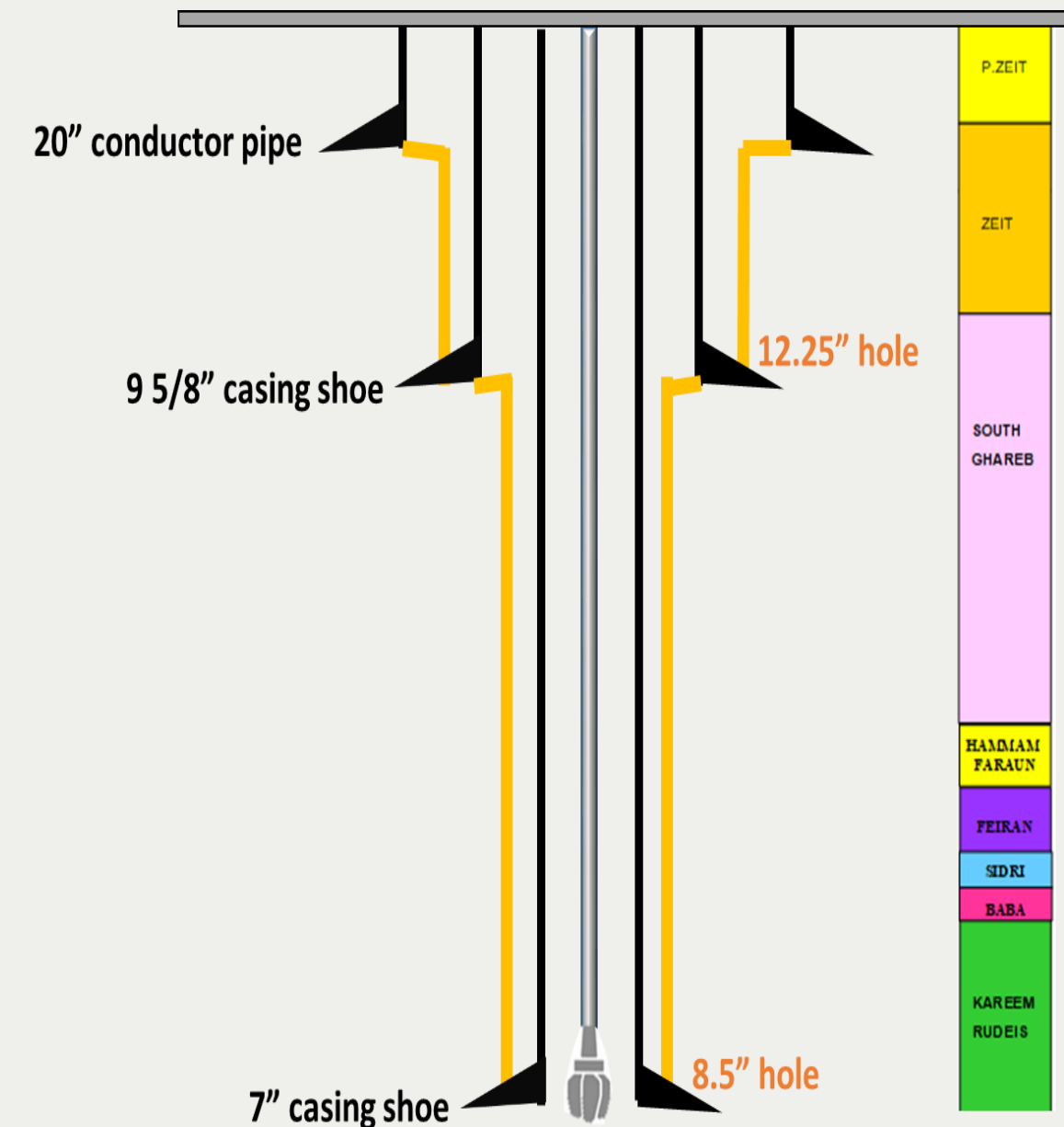
CASE STUDY 2:

-- Would you lower the casing if:

- You have gas readings full component.
- You have no oil shows.
- Resistivity logs are low.

P&A

Lower the casing



CASE STUDY 3:

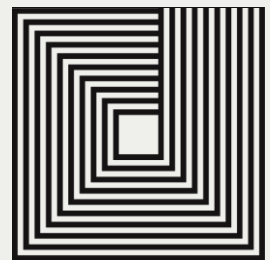
-- Would you report a new formation top if:

- You detect faster/slower ROP.
- You have no cuttings return.

Report the formation

Wait for the samples

THANK YOU



Sara Fakhry

Geologist & Assistant Exploration Manager |
10+ yrs in Oil & Gas | G&G Leader | TechWo...

